

## Product Compliance Declaration

The company **Fillamentum Manufacturing Czech s.r.o.** declares that the product **Fillamentum ASA Extrafill** (3D printing filament) is compliant with the Directive 2011/65/EU and may be used for production of electrical and electronic equipment.

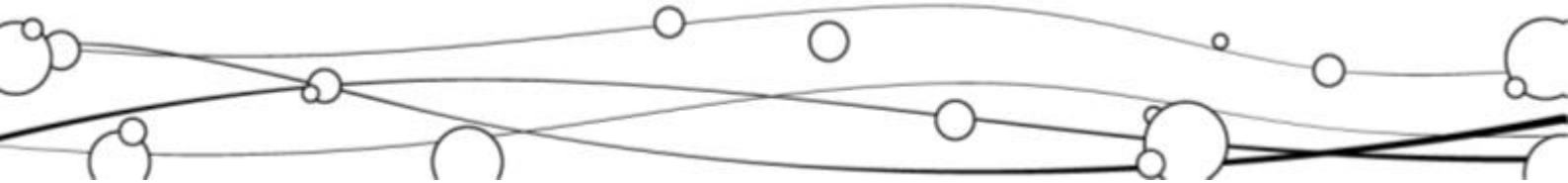
The material used for production is only acrylonitrile styrene acrylate. No substances limited in the Directive were detected in the input material. The colour versions of the product are made from the mixture of primary material with masterbatches. The colours of filament compliant according to the Directive are listed in Table 1. The limited substances are specified in Table 2.

The production is based on the Good Manufacturing Practice according to the Commission Regulation (EC) No 2023/2006. During the production, no substances are added into the material. The company guarantees that all the products placed on the market are in accordance with the technical documentation and the basic product requirements.

The declaration is based on the present knowledge and experience of the material suppliers. According to the Directive 2011/65/EU, it is necessary to determine the concentration values of restricted substances on the final product.

*Table 1: List of products Fillamentum ASA Extrafill that comply with the Directive 2011/65/EU.*

| No. | Product name                    | RAL shade |
|-----|---------------------------------|-----------|
| 1.  | ASA Extrafill "Anthracite Grey" | 7016      |
| 2.  | ASA Extrafill "Green Grass"     | 6010      |
| 3.  | ASA Extrafill "Grey Blue"       |           |
| 4.  | ASA Extrafill "Metallic Grey"   |           |
| 5.  | ASA Extrafill "Natural"         |           |
| 6.  | ASA Extrafill "Sky Blue"        | 5015      |
| 7.  | ASA Extrafill "Traffic Black"   | 9017      |
| 8.  | ASA Extrafill "Traffic Red"     | 3020      |
| 9.  | ASA Extrafill "Traffic Yellow"  | 1023      |
| 10. | ASA Extrafill "Traffic White"   | 9016      |
| 11. | ASA Extrafill "White Aluminium" | 9006      |



*Table 2: List of substances restricted according to the Annex II of the Directive 2011/65/EU and the limits specified in input materials.*

| <b>Substance name</b>                 | <b>Maximum concentration value</b> | <b>Concentration stated in input materials</b> |
|---------------------------------------|------------------------------------|--|
| Lead                                  | 0,1 %                              | < 0,1 %  |
| Mercury                               | 0,1 %                              | < 0,1 %  |
| Cadmium                               | 0,01 %                             | < 0,01 %                                       |
| Hexavalent chromium                   | 0,1 %                              | < 0,1 %  |
| Polybrominated biphenyls (PBB)        | 0,1 %                              | < 0,1 %  |
| Polybrominated diphenyl ethers (PBDE) | 0,1 %                              | < 0,1 %  |
| Bis(2-ethylhexyl) phthalate (DEHP)    | 0,1 %                              | < 0,1 %  |
| Butyl benzyl phthalate (BBP)          | 0,1 %                              | < 0,1 %  |
| Dibutyl phthalate (DBP)               | 0,1 %                              | < 0,1 %  |
| Diisobutyl phthalate (DIBP)           | 0,1 %                              | < 0,1 %  |

